



*jordan fishwick*

**BURNAGE**  
Shawbrook Road



## Shawbrook Road, Burnage, M19 1JF

£375,000

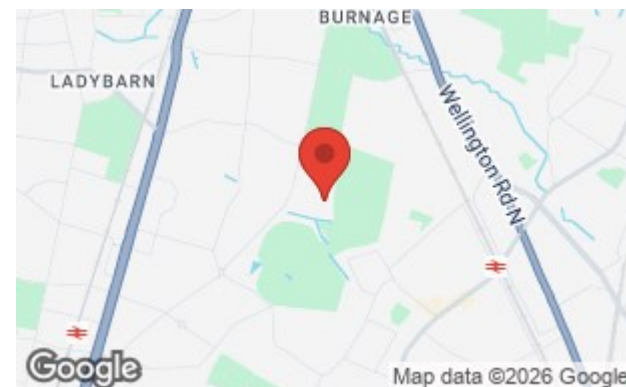


### The Property

An impressive, **SIGNIFICANTLY EXTENDED**, three bedroom semi detached property, located in a popular residential area in Burnage, close to local schools, parks and transport links and only a short walk to Heaton Moor Village. In brief:- Entrance hallway, large lounge with fitted storage cupboards, an impressive open-plan kitchen/living/dining room with sky lights and bi-fold doors opening to the landscaped rear garden, utility room and w/c. To the first floor, a recently fitted family bathroom, master bedroom with fitted wardrobes and two further bedrooms. Externally the property benefits from a large lawned garden with sheltered BBQ and seating area, along with a paved driveway to the front providing off-road parking.

### Directions

M19 1JF



- Three good sized bedrooms
- Significantly extended
- Open plan kitchen/dining/living space
- Newly fitted bathroom
- Utility & downstairs w/c
- Double glazing & gas central heating
- Driveway for off-road parking
- Large landscaped rear garden
- Close to amenities

Postcode - M19 1JF

EPC Rating - C

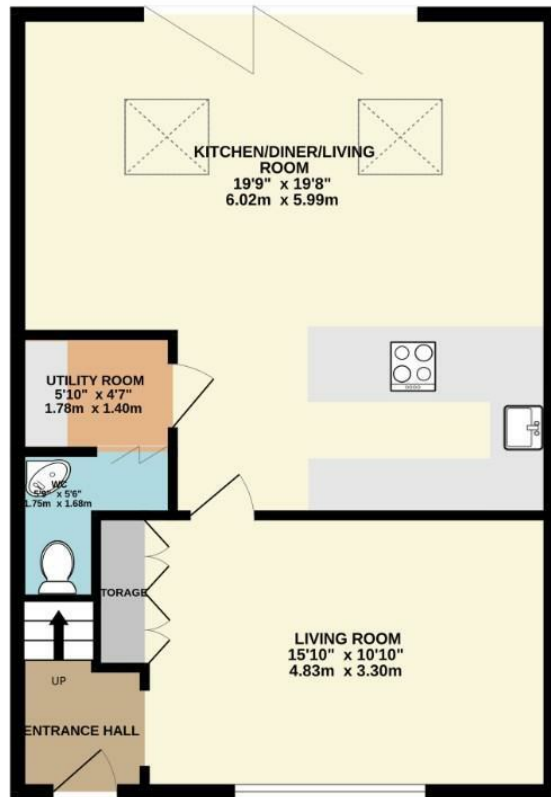
Floor Area - 1025.00 sq ft

Local Authority - Manchester City Council

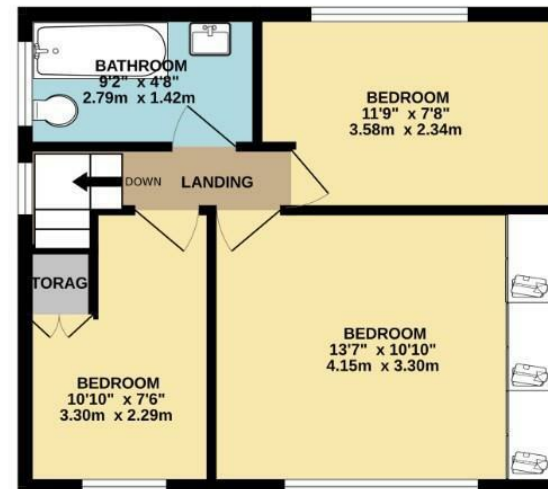
Council Tax - A



GROUND FLOOR  
638 sq.ft. (59.3 sq.m.) approx.



1ST FLOOR  
387 sq.ft. (36.0 sq.m.) approx.



TOTAL FLOOR AREA: 1025 sq.ft. (95.3 sq.m.) approx.  
Measurements are approximate. Not to scale. Illustrative purposes only  
Made with Metropix ©2026



These particulars are believed to be accurate but they are not guaranteed and do not form a contract. Neither Jordan Fishwick nor the vendor or lessor accept any responsibility in respect of these particulars, which are not intended to be statements or representations of fact and any intending purchaser or lessee must satisfy himself by inspection or otherwise as to the correctness of each of the statements contained in these particulars. Any floorplans on this brochure are for illustrative purposes only and are not necessarily to scale.

Offices also at: Wilmslow, Macclesfield, Hale, Sale, Chorlton, Glossop, Manchester & Salford

757-759 Wilmslow Road, Didsbury Village, Manchester

0161 445 4480

didsbury@jordanfishwick.co.uk  
www.jordanfishwick.co.uk